



1317



***Program 1317***

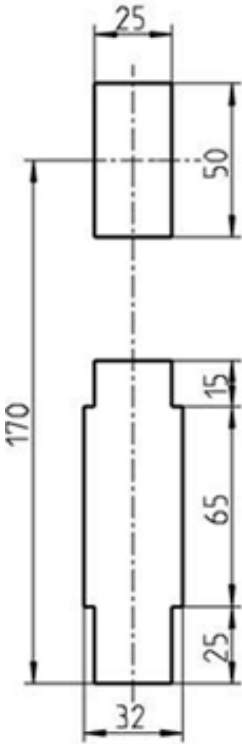
***Product Line  
PROTECTOR  
Outdoor Handles***

***March 2013***

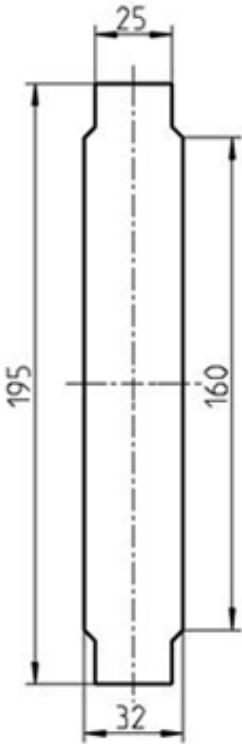
Background



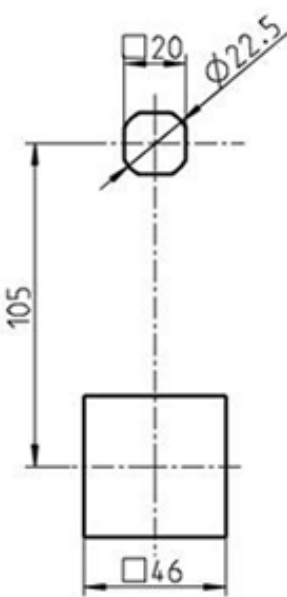
standard cut-out  
1125 (Schroff)



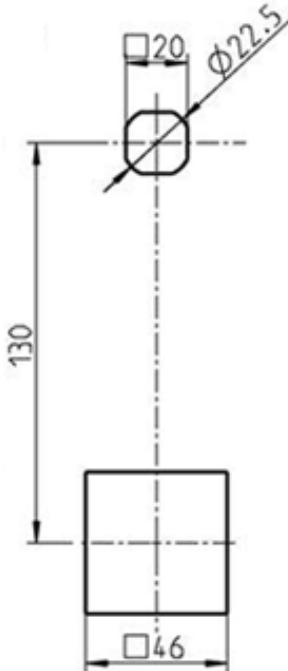
standard cut-out  
1125 (Schroff)



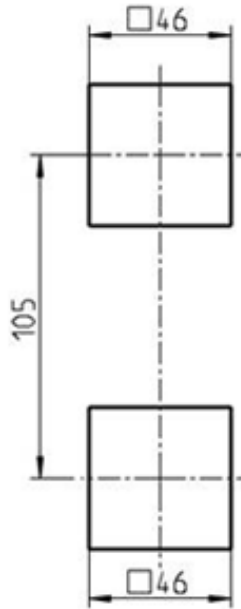
standard cut-out



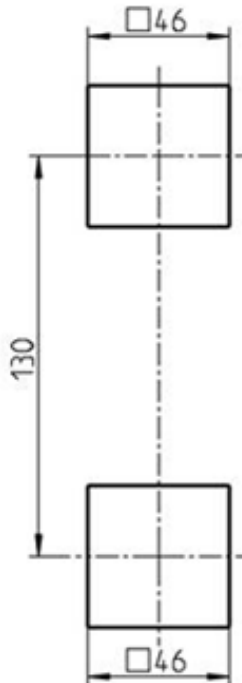
standard cut-out  
(Knürr)



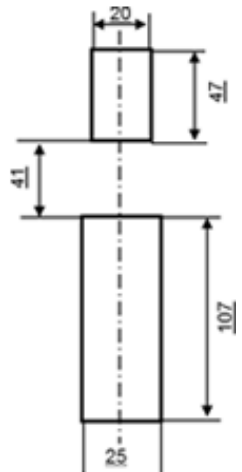
Rittal/ Sichert/ Krone



standard cut-out



Almatec



Enclosure manufacturer	EMKA art.-no.	Telekom-material-no.
Krone, Sichert, Knürr	1154-U7	40248135
Schroff, EMKA	1154-U9	40248136
Rittal	1154-u10	40248137
Almatec	1154-U8	40248138





# Presentation of program

## Target

„... enter the outdoor market on a global basis with a complete product portfolio.“

Program overview



## ***Benefits at a glance***

### **All new handles meet these standards:**

- WK2 (RC2, resistance class 2, protection against vandalism) certification according to DIN V ENV1630 (versions in Zinc Die)
- Shock- and vibration proof according to DIN EN 61373
- Protection class IP65
- Suitable for 40 mm profile half cylinder
- 45 mm cylinder with adjustments or as separate article no.
- Integrated scratch protection
- robust sliding cover or rotary disc
- Information regarding article no.:  
HJ ...agate grey (RAL 7038) with anti-graffiti coating  
BO ...agate grey (RAL 7038)  
without additional code ...black

Zinc-die

PA

Single cylinder  
swinghandles

Double cylinder  
swinghandles

Double cylinder  
swinghandles

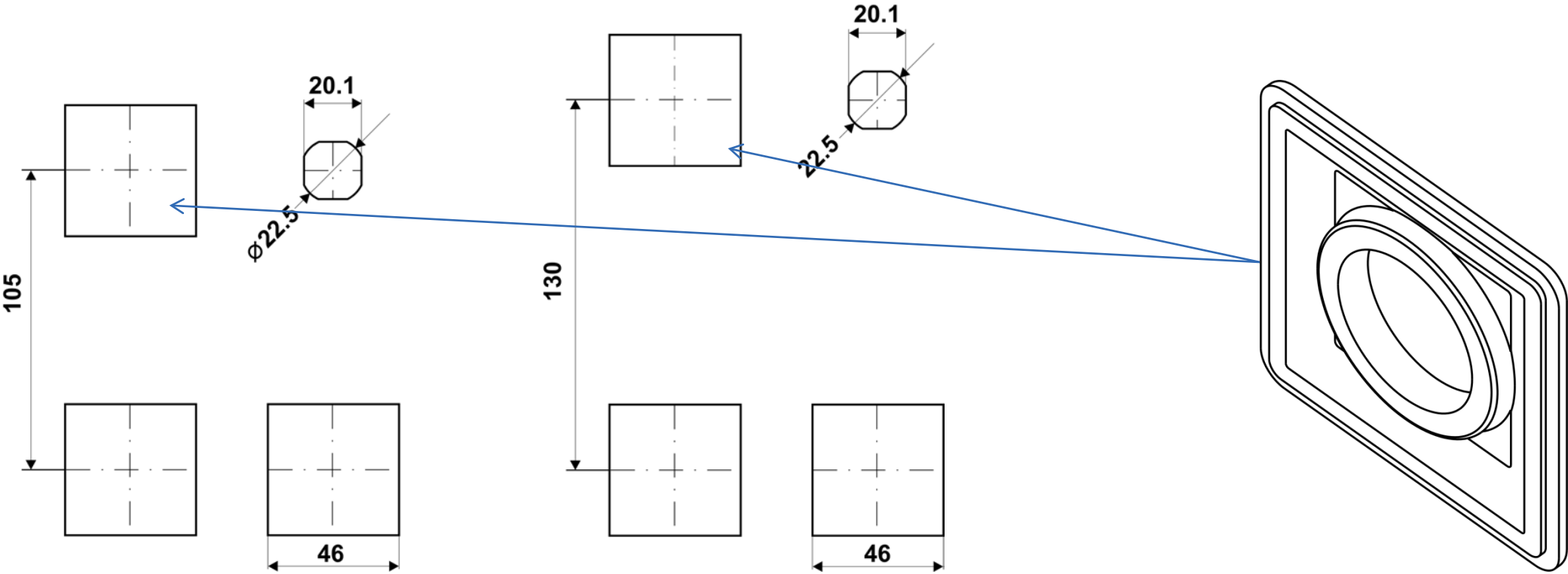
Single cylinder  
swinghandles

Zinc-die				PA					
Single cylinder swinghandles				Double cylinder swinghandles		Double cylinder swinghandles		Single cylinder swinghandles	
ELM		ELM							
1317-U151(HJ) (w/o LED))	1317-U102(HJ) 40 mm cylinder cam 30°	1317-U161(HJ) (w/o LED)	1317-U122(HJ) 40 mm cylinder cam 30°	1317-U201(HJ) key removable	1317-U221(HJ) key removable	1317-U301(BO) Key removable	1317-U321(BO) Key removable	1317-U401-01(BO) 40 mm cylinder insert, cam 45°	1317-U421-01(Bo) 40 mm cylinder insert, cam 45°
1317-U152(HJ) (with LED)	1317-U103(HJ) 45 mm cylinder cam 45°	1317-U162(HJ) (with LED)	1317-U123(HJ) 45 mm cylinder cam 45°	1317-U202(HJ) key non removable	1317-U222(HJ) key non removable	1317-U302(BO) Key non removable	1317-U322(BO) Key non removable	1317-U403-01(BO) 45 mm cylinder insert, cam 45°	1317-U423-01(BO) 45 mm cylinder insert, cam 45°

	1317-U151/152 1317-U161/162	1317-U102/103 1317-U122/123	1317-U201/202 1317-U221/222	1317-U301/302 1317-U321/322	1317-U401/403-01 1317-U421/423-01
Mechanical version	-	X	X	X	X
Electromechanical version	X	-	-	-	-
IP 65	X	X	X	X	X
WK2	X	X	X	-	-
For 40 /45 mm profile half cylinder	X	-	X	X	-
For 40 mm profile half cylinder only	0	X	0	0	X
For 45 mm profile half cylinder only	0	X	0	0	X
Key non-removable	-	-	U202/U222	U302/U322	-

cut-outs

With adaptor 1107-53-01AA suitable for  
46 x 46 mm cut-out





**Single cylinder swinghandle (Zamak)**



**- Mechanical version -**

- 1317-U102-(HJ) (cut-out 105)
- 1317-U122-(HJ) (cut-out 130)
- HJ ⇒ with anti-graffiti coating
- for 40 mm profile half cylinder (30° up to 90° locking possible)
- WK2 certification according to DIN V ENV 1630
- robust sliding cap
  
- 1317-U103-(HJ) (105)
- 1317-U123-(HJ) (130)
- for 45 mm profile half cylinder (45° up to 90° locking possible)  
(change to 40 mm profile half cylinder possible by removal of a plate)

**Single cylinder swinghandle (Zamak)**



**- Electromechanical version -**

- 1317-U151(HJ) (105) w/o LED
- 1317-U152(HJ) (105) with LED
- 1317-U161(HJ) (130) w/o LED
- 1317-U162(HJ) (130) with LED
- HJ ⇔ RAL 7038 with anti-graffiti coating
- WK2 certification according to DIN V ENV 1630
- Mechanical override with 40 mm or 45 mm profile half cylinder
- Wide temperature range -30° to + 80° C
- 48V DC operating voltage
- Push-to-pull feature
- Encoded release with explicit identification
- No power consumption in standby-mode

**Double cylinder swinghandles (Zamak)**



**- Mechanical version -**

- 1317-U201(HJ) (105)
- 1317-U221(HJ) (130)
- HJ ⇨ RAL 7038 with anti-graffiti coating
- WK2-certification according to DIN V ENV 1630
- Separate access authorization
- Suitable for 40 / 45 mm profile half cylinders
- Robust sliding cap
- Key removable when open
- 1317-U202(HJ) (105)
- 1317-U222(HJ) (130)
- As above, but:
- key non-removable in open status

**Double cylinder swinghandles (plastics)**



**- Mechanical version -**

- 1317-U301(BO) (105)
  - 1317-U321(BO) (130)
  - BO ⇨ RAL 7038
  - Low cost version
  - Separate access authorization
  - Suitable for 40 / 45 mm profile half cylinders
  - Robust sliding cap (Zinc-die)
  - Key removable when open
- 
- 1317-U302(BO) (105)
  - 1317-U322(BO) (130)
  - As above, but:
  - Key non-removable when open

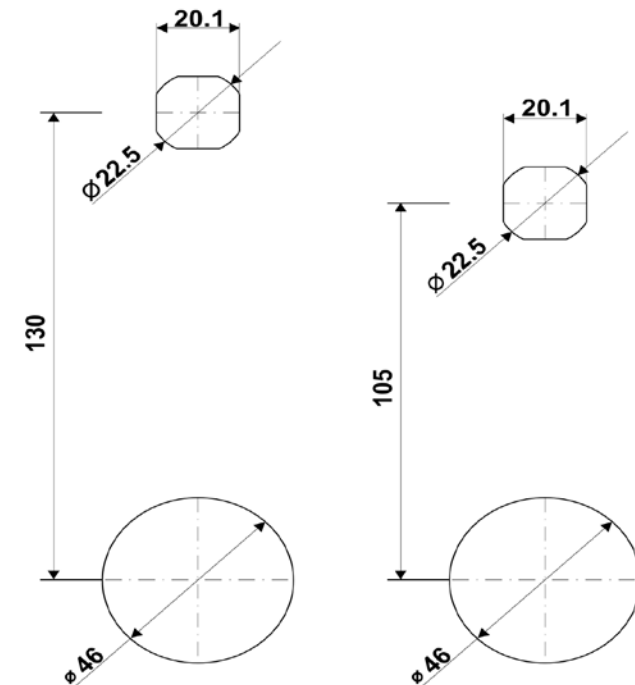


*Single cylinder swinghandle (plastics)*



**-Mechanical version –**

- 1317-U401-01(BO) (105)
- 1317-U421-01(BO) (130)
- with modular technology for 40 mm profile half cylinders
- 1317-U403-01(BO) (105)
- 1317-U423-01(BO) (130)
- with modular technology for 45 mm cylinders  
change to 40mm cylinders possible
- additional cut-outs (see below)





**Product presentation**

**versions**

*Colour options*



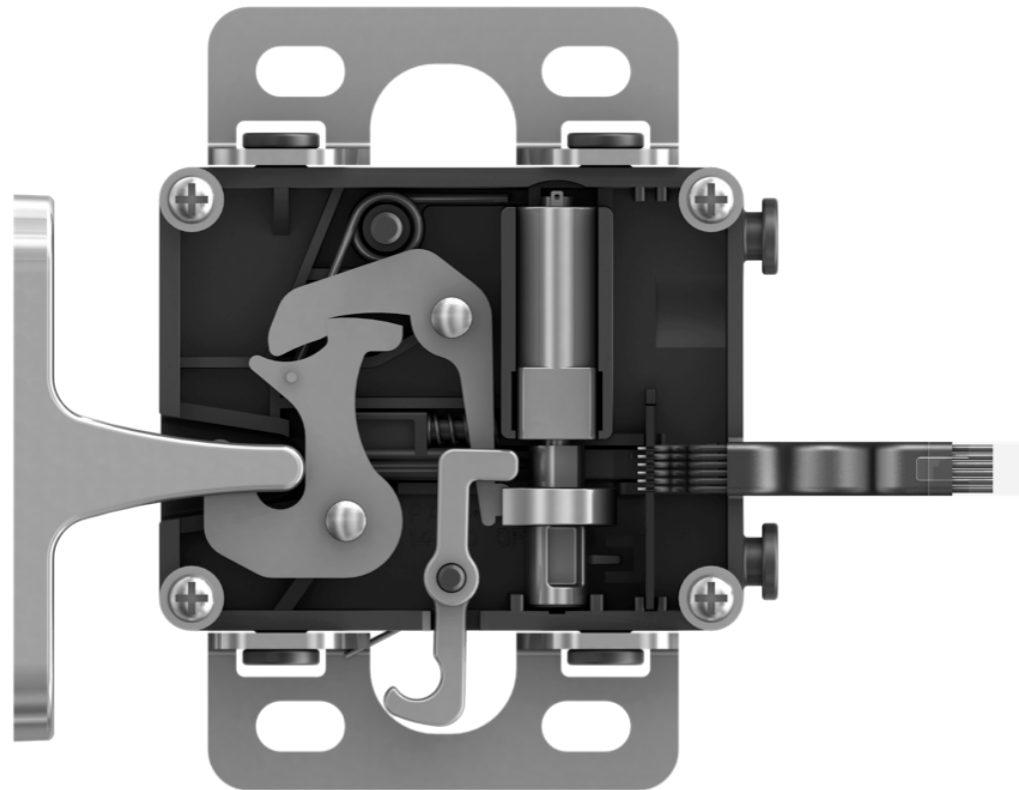
- many versions on request e.g.
- escutcheon Zinc-die silver
- handle Zinc-die black



**Supplementary  
products**



### Inside locking systems



#### Single point latch

- concealed locking system
- high mechanical strength by means of plastic-metal combination
- variable mounting options
- mechanical emergency opening

#### Version Basic:

- opening against gasket pressure

#### Version Basic delayed Re-Lock:

- remains in open status until power

#### Version Energy-store:

- automatic opening in case of power failure

### Modification of 1107 Outdoor handle



- PA 6 30% GF
- With square cap to cover adjacent cut-out
- 40 mm or 45 mm (-U169-G) profile half cylinder
- IP 65

***Thank you for your  
attention.***

---

Contact Sales Department

Tel.: +44 2476 616 505  
Fax: + 44 2476 612 837  
E-Mail: [sales@emka.co.uk](mailto:sales@emka.co.uk)

Contact Technical Department

Tel.: +44 2476 616 505  
Fax: + 44 2476 612 837  
E-Mail: [enquiries@emka.co.uk](mailto:enquiries@emka.co.uk)

EMKA (UK) Limited

Patricia House,

Bodmin Road

Coventry

CV2 5DG